

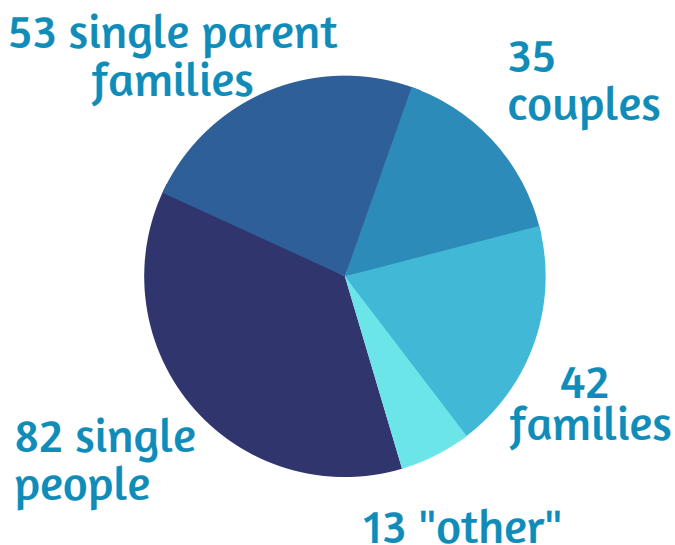
June at a glance..

 225, 3-day emergency food parcels given out

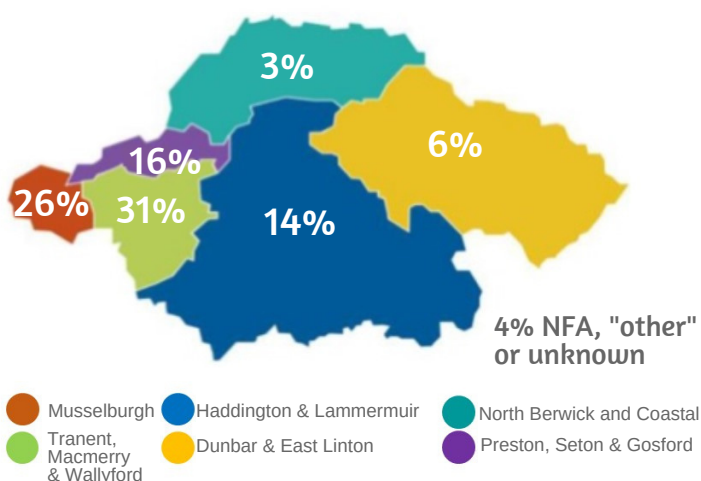


544 people fed
39% of these were children

Who received our parcels?



Where did our parcels go?



Reasons for referrals

Low income

Benefit delays or changes

Refused crisis grant

Debt

*Delayed wages, sickness, homeless, domestic violence, refused STBA, child holiday meals, other

50% of referrals in June were due to "low income", with benefit delays/changes (17%) and refused crisis grant (16%) accounting for nearly 1/3 of referrals.

How much was donated?

 4286kg of donations

How much did we give out?

 5192kg given out

A foodbank snapshot...

1ST JULY 2020 – 30TH JUNE 2021

How many people did we feed?



6179 people fed
This includes multiple referrals

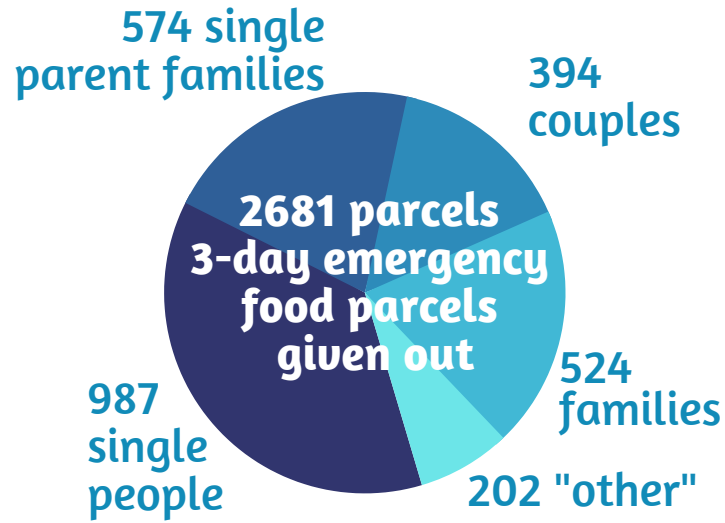


Of these 37% were under the age of 16

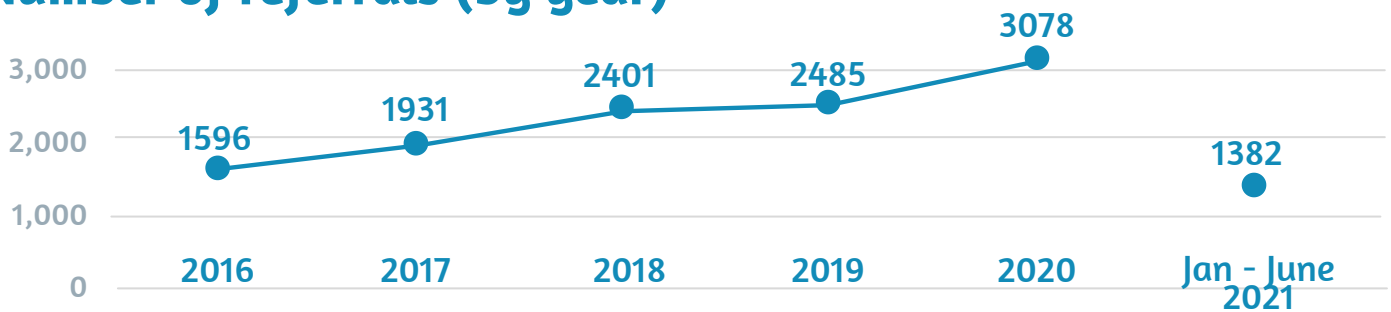
Top 3 reasons for referral

52% due to low income
19% benefit changes or delays
9% refused SWF crisis grant

Who received our parcels?



Number of referrals (by year)



Reasons for referrals (by year)

